

Neighbourhood Watersheds Map It's all connected

Rain that falls in our neighbourhoods flows to the ocean. The same is true when watering your garden or lawn, or washing your car. Along the way, that water washes fertilizers and other chemicals from yards and streets into storm drains that flow into Esquimalt's marine environment. Whatever is carried – oil, anti-freeze, paint, soap, fertilizer, pesticides – can have harmful effects on plants and animals, and create an unhealthy place for us to swim and play.

This map shows where water runoff from your property and your neighbourhood ends up, and helps show how your actions as a resident may have distant and unexpected consequences.

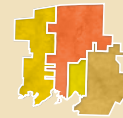
How to Use this Map:

1. Find where you live on the map.
2. Note the map colour in your neighbourhood. This colour represents your Neighbourhood Watershed.
3. Look along the shoreline for a nearby watershed outflow that matches the colour of your neighbourhood. This outflow is where the water that falls in your neighbourhood flows into the ocean.
4. Take a walk down to your watershed outflow location and see what living creatures might be affected by pollutants flowing into the water. Can you think of products that you use that affect water quality flowing from your neighbourhood?

For watersheds with an unconfirmed outflow location there may be more than one route for water to drain. Water may travel over land or be part of a small storm water system, but regardless of how it moves, all routes empty into the ocean in the end.

The information on this map is obtained from various sources. As a result, the Township of Esquimalt cannot warrant that it is current, accurate or complete, and provides it for your convenience only. Use of this information without verification in the field is at your own risk.

How to read the map



Watersheds
(look for colour-matched outflows)



Watershed
Outflow



Watersheds with
unconfirmed outflow



Parks and
Green Space

This map is the result of a partnership between the Township of Esquimalt and the Capital Regional District Integrated Watershed Management Program.

For more information on maintaining healthy watersheds, please visit:
www.esquimalt.ca/watersheds

CRD Watersheds:
www.crd.bc.ca/education/our-environment/watersheds

Gorge Waterway Initiative: www.crd.bc.ca/gwi

Reporting a Spill:

If you notice a spill that enters municipal roads or waterways please report it immediately by noting the location and calling:

Esquimalt Public Works Department
Tel: 250-414-7108
Emergency After Hours: 250-995-7654

*If you are unable to reach a municipal official,
call Emergency Management BC at 1-800-663-3456*

DISTRICT OF SAANICH



TOWN OF VIEW ROYAL

GORGE WATERWAY

SONGHEES NATION

GORGE WATERWAY

ESQUIMALT HARBOUR

FEDERAL / DND LANDS

CITY OF VICTORIA

FEDERAL / DND LANDS

WEST BAY

City of ESQUIMALT

NEIGHBOURHOOD WATERSHEDS MAP



Watershed (look for colour-matched outflows)



Watershed Outflow

Watersheds with unconfirmed outflow



Parks and Green Space

Rain that falls in our neighbourhoods flows to the ocean. The same is true when watering your garden or lawn, or washing your car. Along the way, that water washes fertilizers and other chemicals from yards and streets into storm drains that flow into Esquimalt's marine environment. Whatever is carried - oil, antifreeze, paint, soap, fertiliser, pesticides - can create an unhealthy place for us to swim and play. What you do at home can be harmful to the oceans that surround our community.

STRAIT OF JUAN DE FUCA

FEDERAL / DND LANDS

VICTORIA HARBOUR



GORGE WATERWAY

SONGHEES
NATION

Esquimalt
Gorge Park

Gorge Vale Golf Club

Gorge
Creek

0726

0726A

0726B

0728

0731

0732

0733

0735

0736

0736A

0737

0738

0740

0742

0742A

0742B



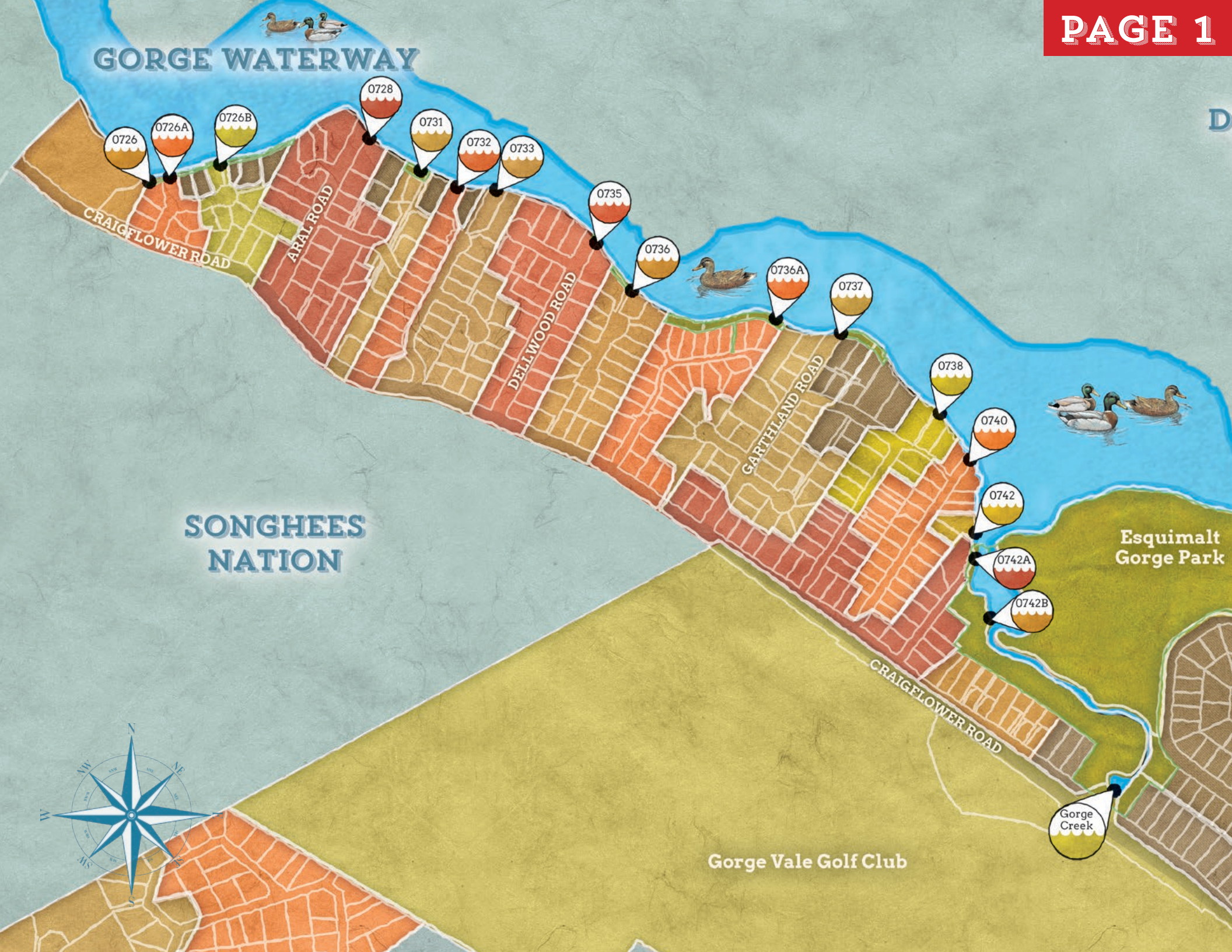
CRAIGFLOWER ROAD

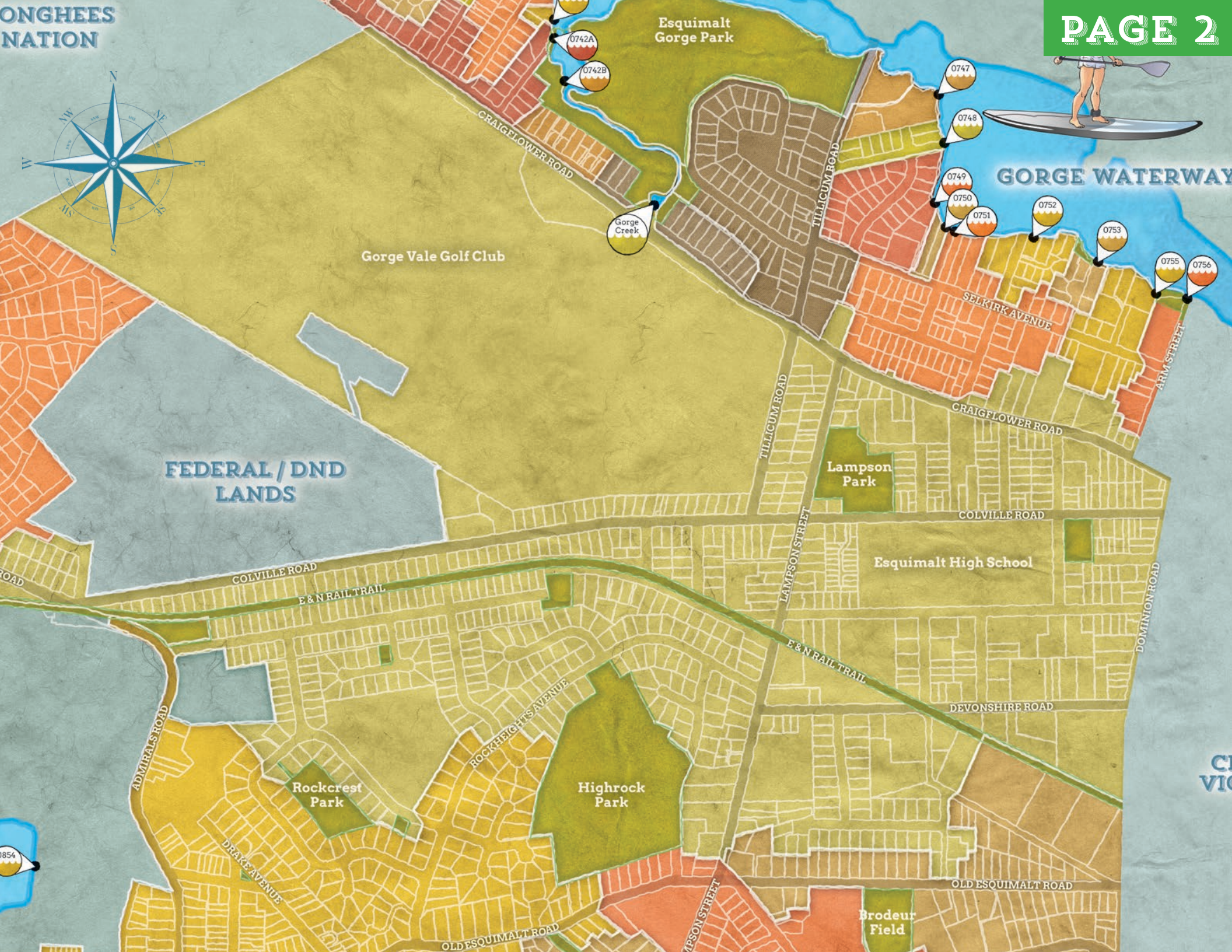
ARAL ROAD

DELLWOOD ROAD

GARTH LAND ROAD

CRAIGFLOWER ROAD





0742A
0742B

Gorge Creek

0747

0748

0749

0750

0751

0752

0753

0755

0756

0854

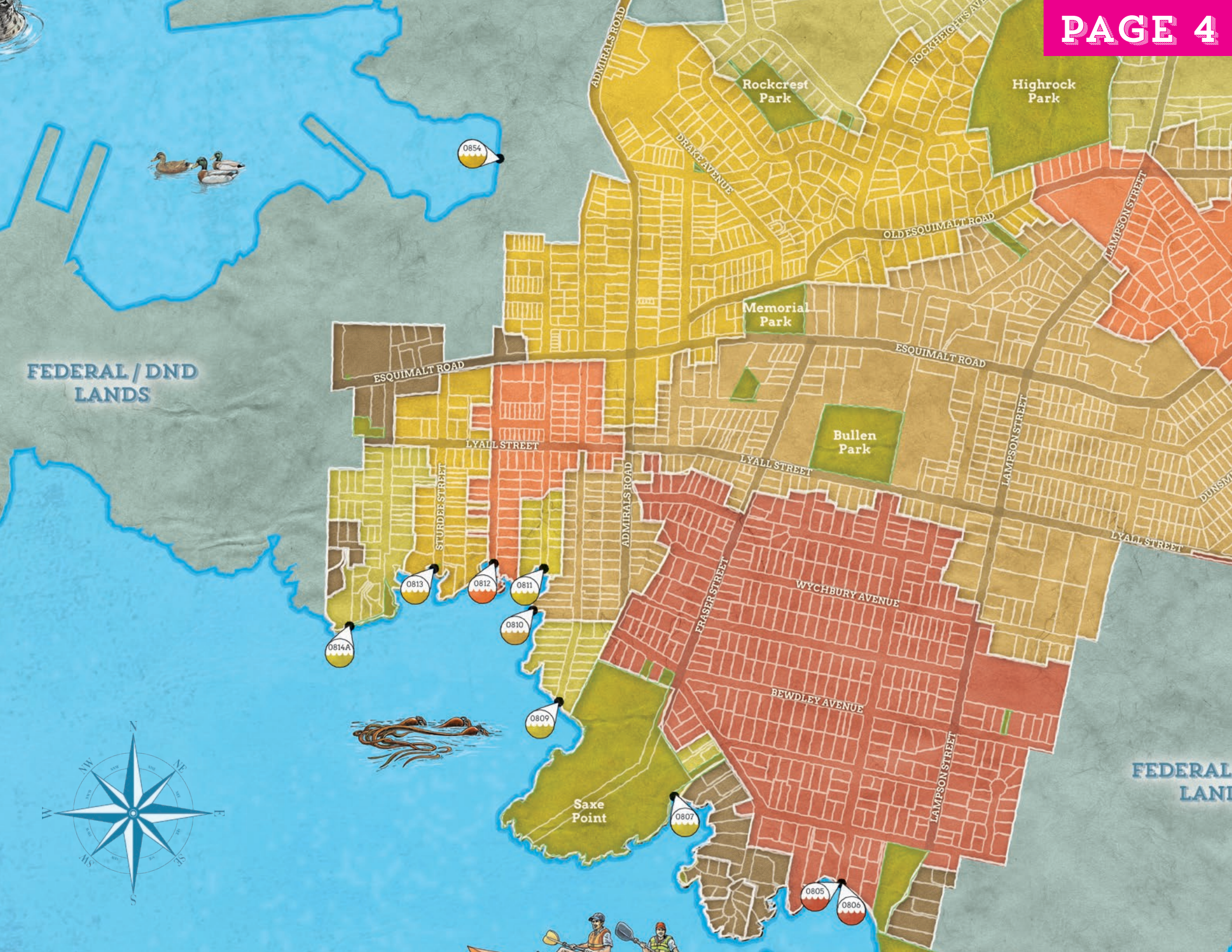
CVIC



ERIN TRAIL TRAIL

ADMIRALS ROAD

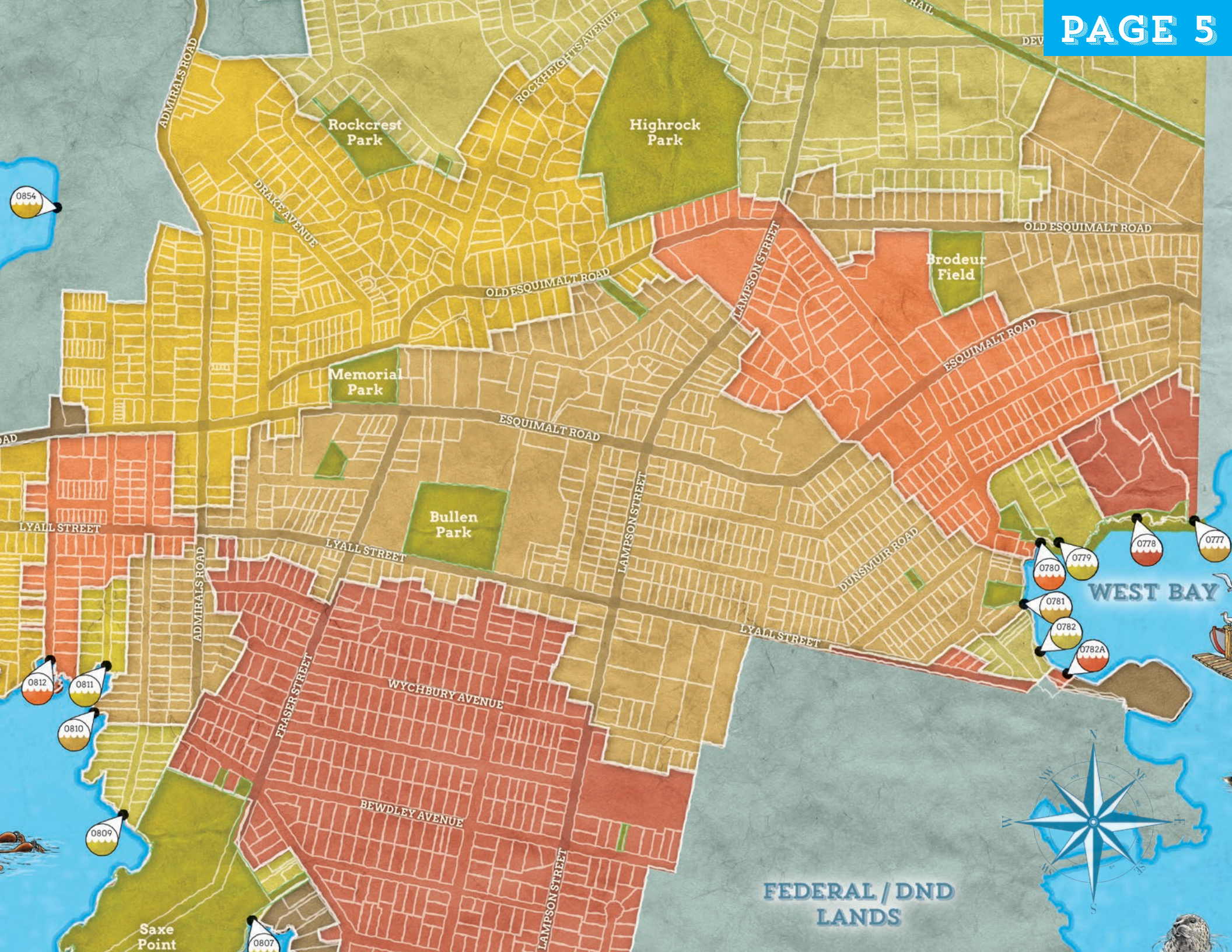




FEDERAL / DND
LANDS



FEDERAL
LANDS



0854

0812

0811

0810

0809

0807

0780

0779

0778

0777

0781

0782

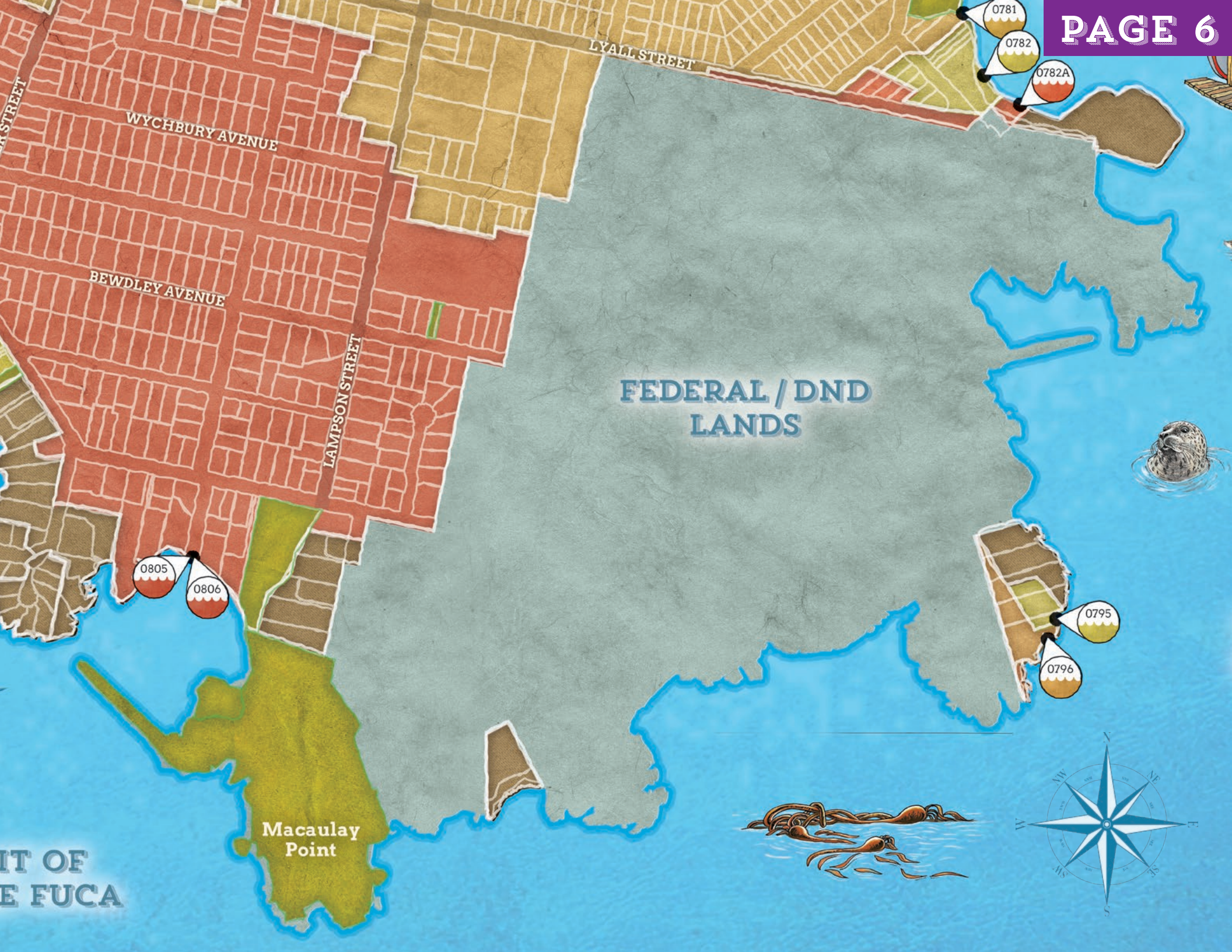
0782A

Saxe Point

FEDERAL / DND LANDS

WEST BAY





FEDERAL / DND
LANDS

Macaulay
Point

BAY OF
THE FUCA

