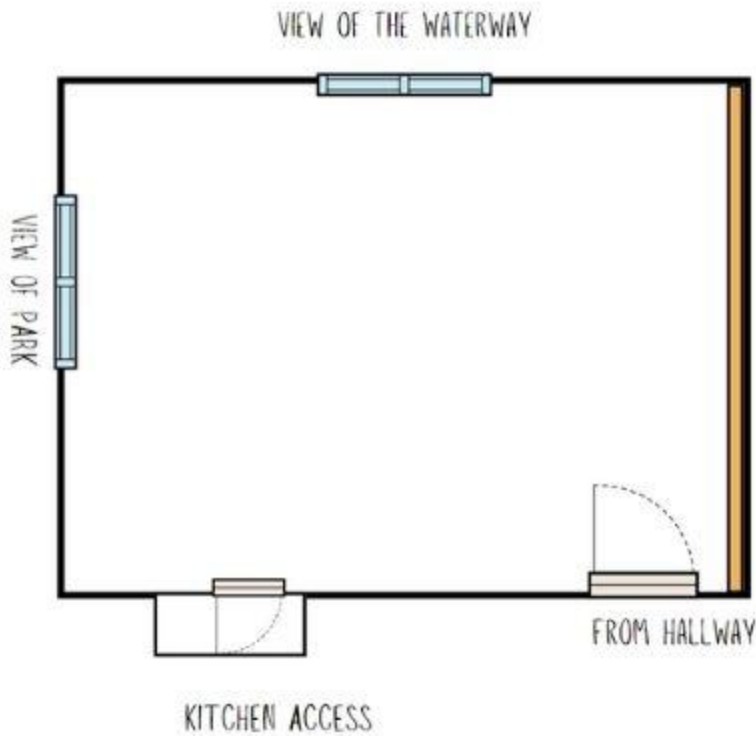
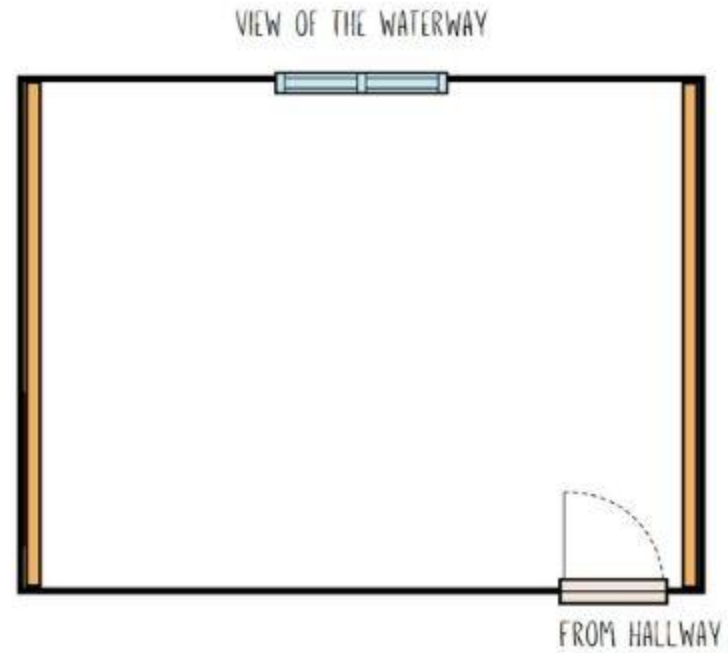


Gorge Park Pavilion Floor Plans

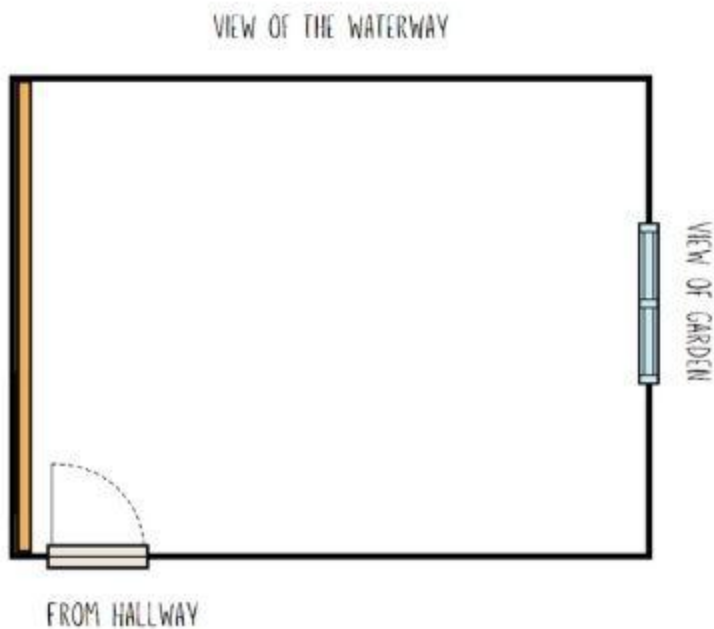
LOWER A (1000 SQ FT)



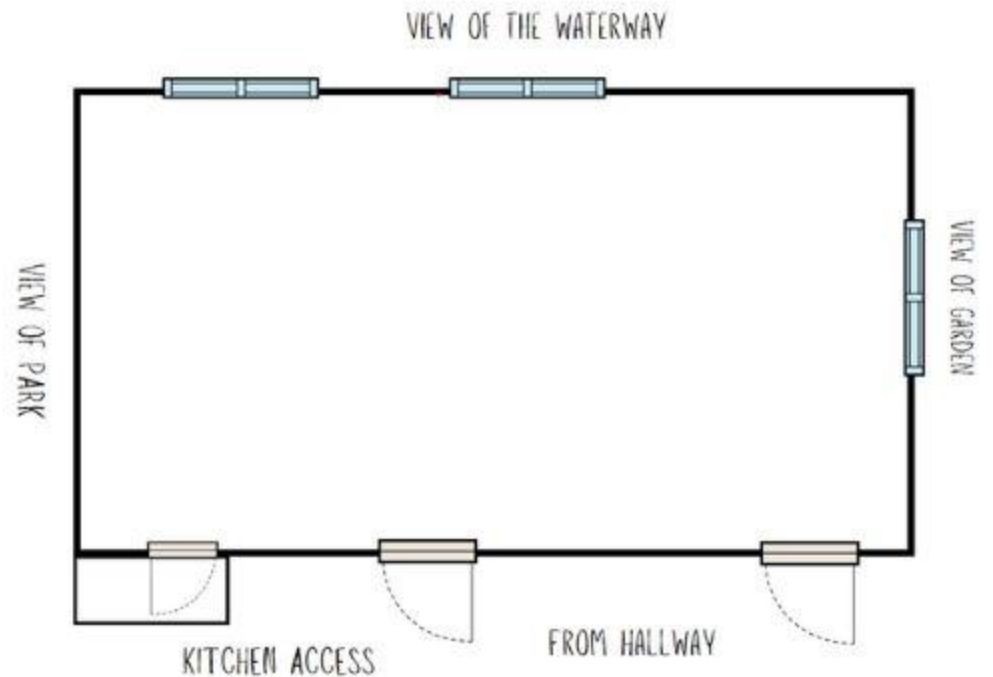
LOWER B (1000 SQ FT)



LOWER C (1000 SQ FT)



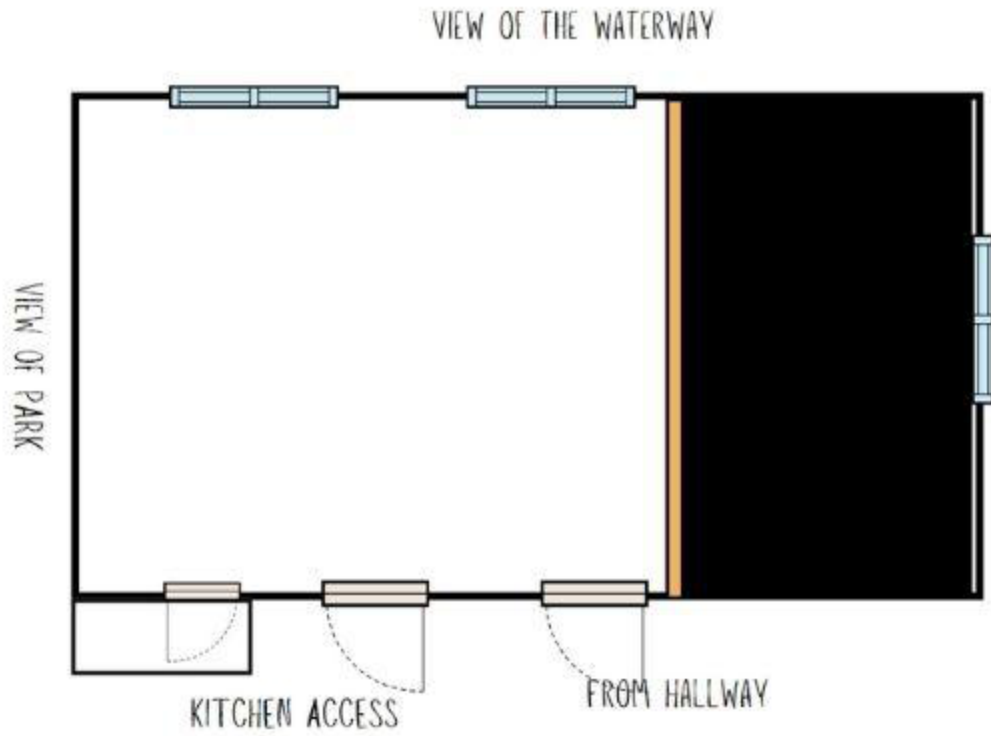
LOWER HALL (3000 SQ FT)



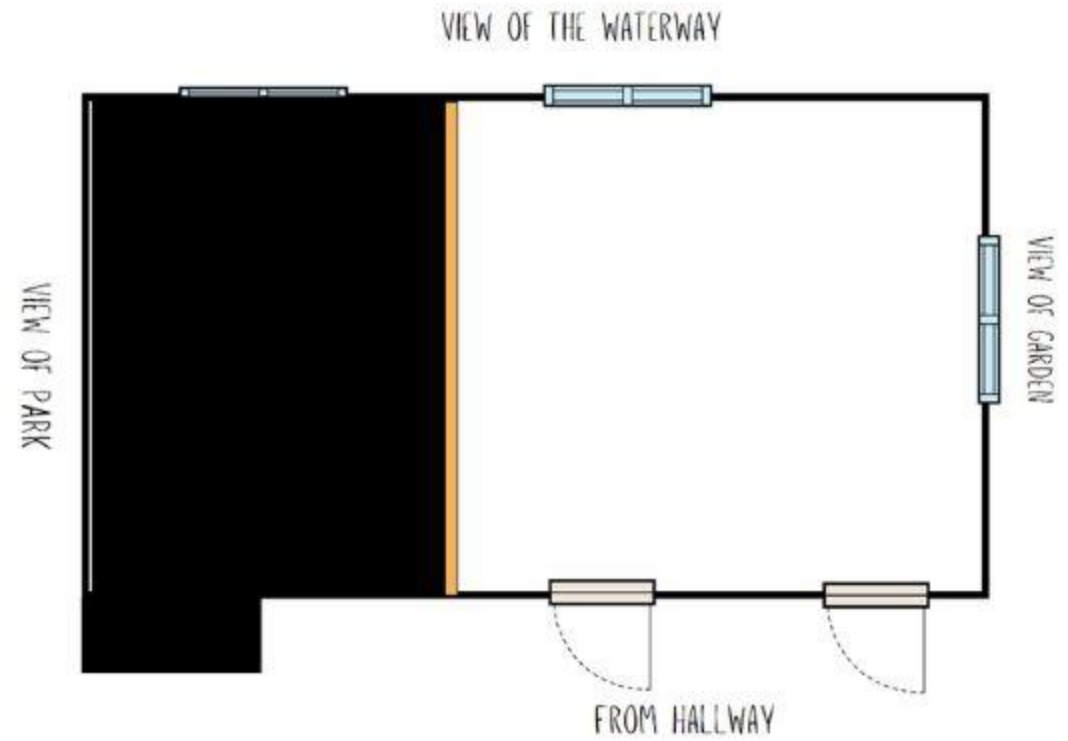
— = WALL DIVIDER — — — = PATIO DOORS

Gorge Park Pavilion Floor Plans

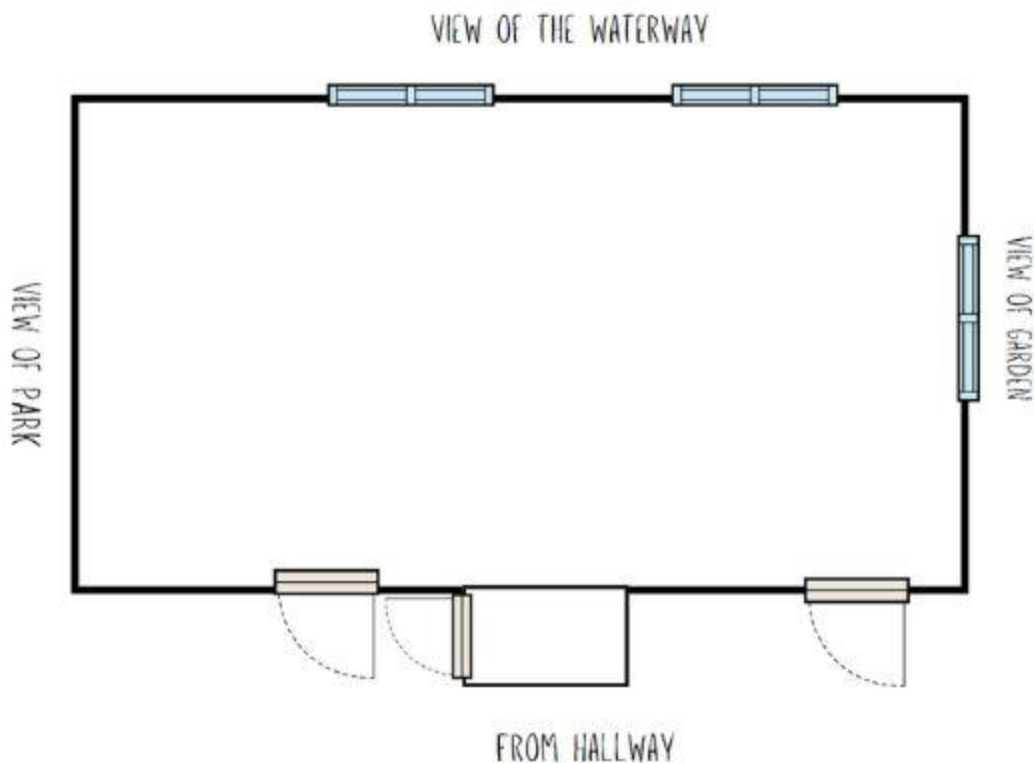
LOWER HALL A/B (2000 SQ FT)



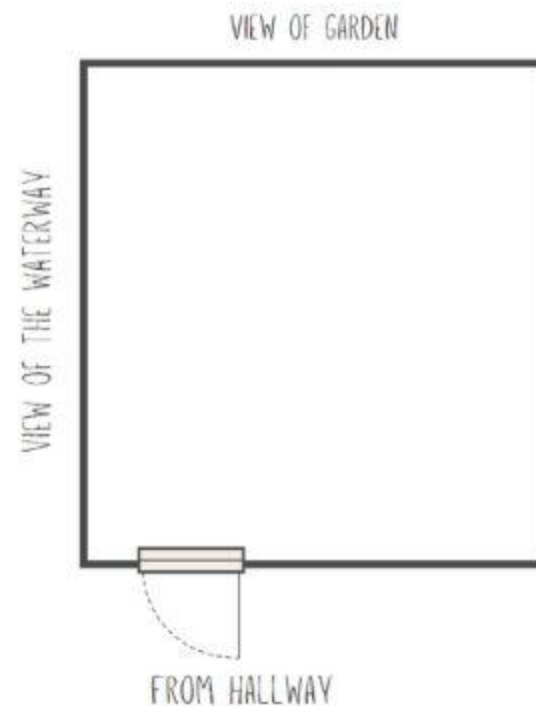
LOWER HALL B/C (2000 SQ FT)





UPPER HALL (3000 SQ FT)



BOARDROOM



 = WALL DIVIDER  = PATIO DOORS