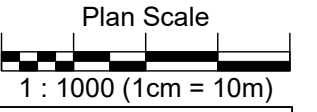
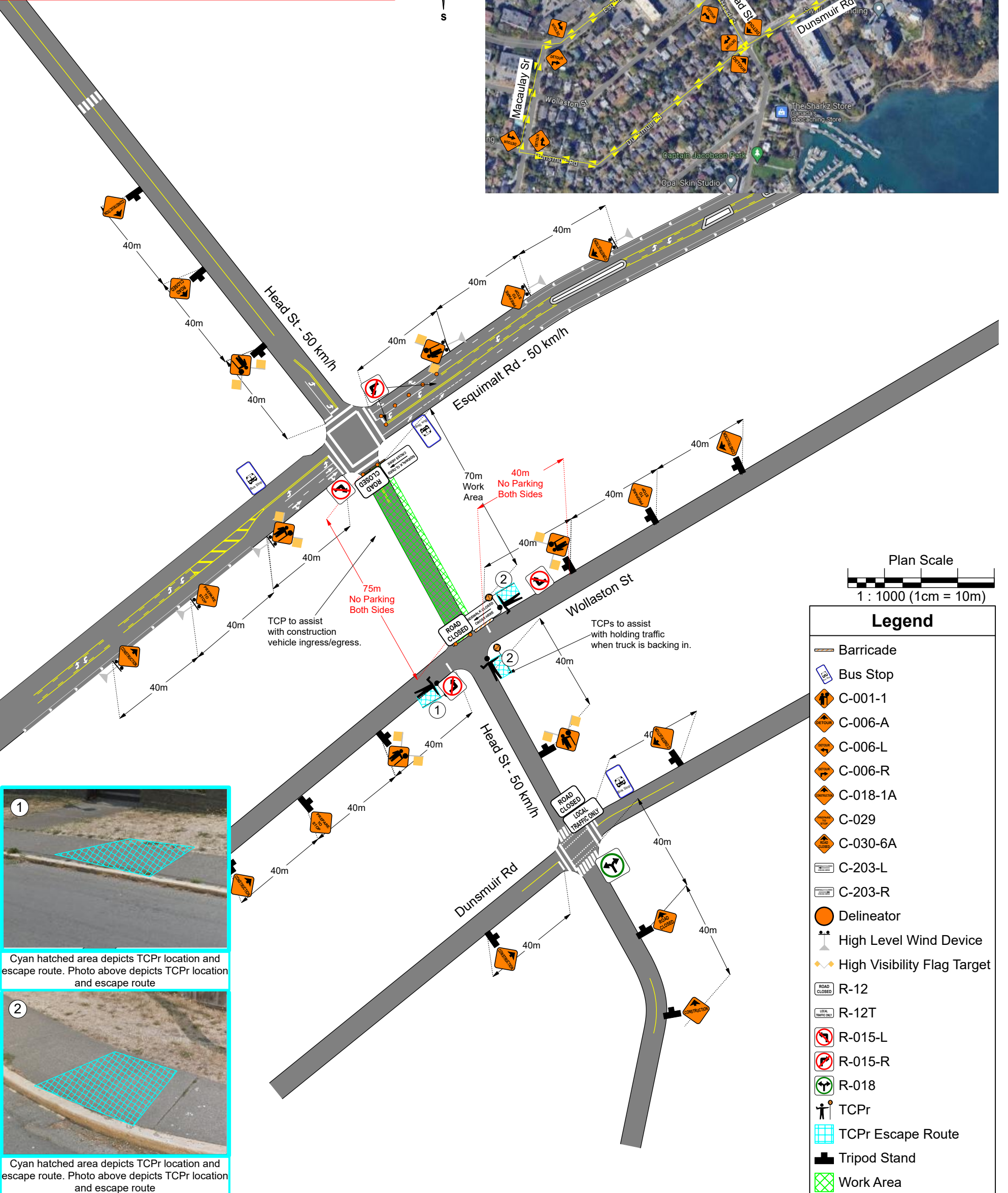
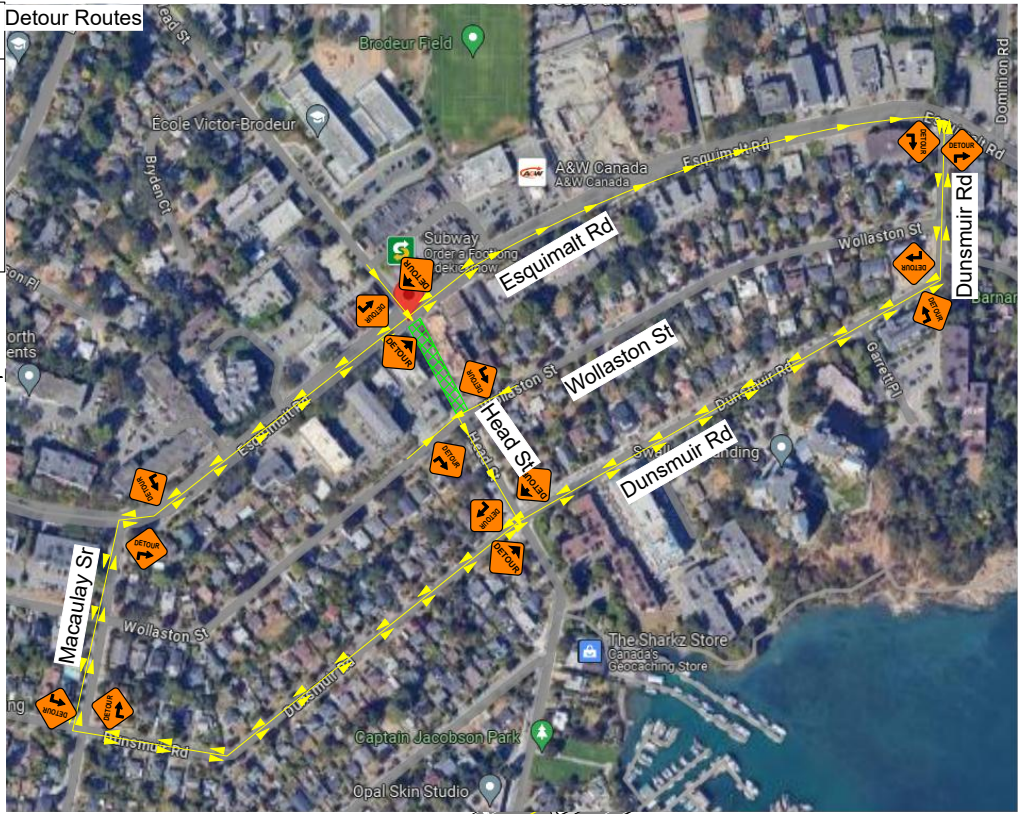
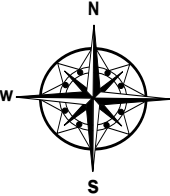


Date: July 19, 2024 **Author:** Marley Futerko 604-444-3732 Ext. 337 SN#4504 **Project:** PH - 0264
The Universal Group: 9770 199A St Langley, BC V1M 2X7 **Office:** 604-444-3799 **Fig:** 19.2 / 11.15
Dwg: 001 Rev: 004

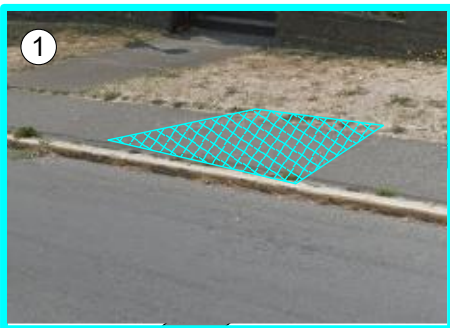
Comments:
 Lexi Development Group Inc
 Roham Karamiyar 778-772-1312

Township of Esquimalt
 Job location: 899 Esquimalt Rd & Head St
 Closure description: Sidewalk & Road Closure
 Job description: Concrete Pours, Boom Pump & Deliveries
 Tentative date and hours: TBD
 Traffic Plan based on a 50 km/h speed zone
 Traffic specifications based on the Traffic Management Manual for Work on Roadways 2020

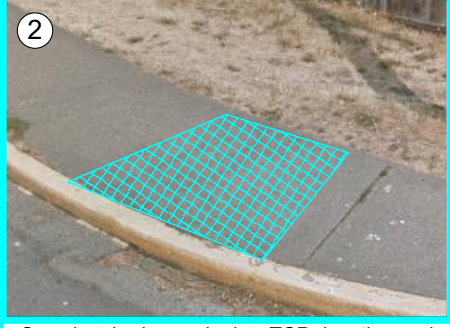
Notes:
 - Plan was prepared in accordance with MoTI TMM 2020.
 - Client has been notified of the WorkSafeBC OHS Regulations Part 18 amendment & it is their responsibility to ensure site compliance.
 - Plan must be reviewed if there are any changes to the findings of risk assessment (provided), or after one year.
 - Implementation of set up to follow the process outlined in the SJP-019 Device Installation Safe Job Procedure.
 - Advanced Warning Sign distances may be shortened to suit urban block length.
 - 3.5m lane width to be maintained.
 - TCP to identify & illustrate escape route once on site.
 - Should the escape route illustrated become no longer viable, the traffic control onsite to note change in position on FLRA.
 - TCPs to hold traffic when trucks are backing into the work area.
 - Driveway access to be maintained.



Legend	
	Barricade
	Bus Stop
	C-001-1
	C-006-A
	C-006-L
	C-006-R
	C-018-1A
	C-029
	C-030-6A
	C-203-L
	C-203-R
	Delineator
	High Level Wind Device
	High Visibility Flag Target
	R-12
	R-12T
	R-015-L
	R-015-R
	R-018
	TCPr
	TCPr Escape Route
	Tripod Stand
	Work Area



1
 Cyan hatched area depicts TCPr location and escape route. Photo above depicts TCPr location and escape route



2
 Cyan hatched area depicts TCPr location and escape route. Photo above depicts TCPr location and escape route